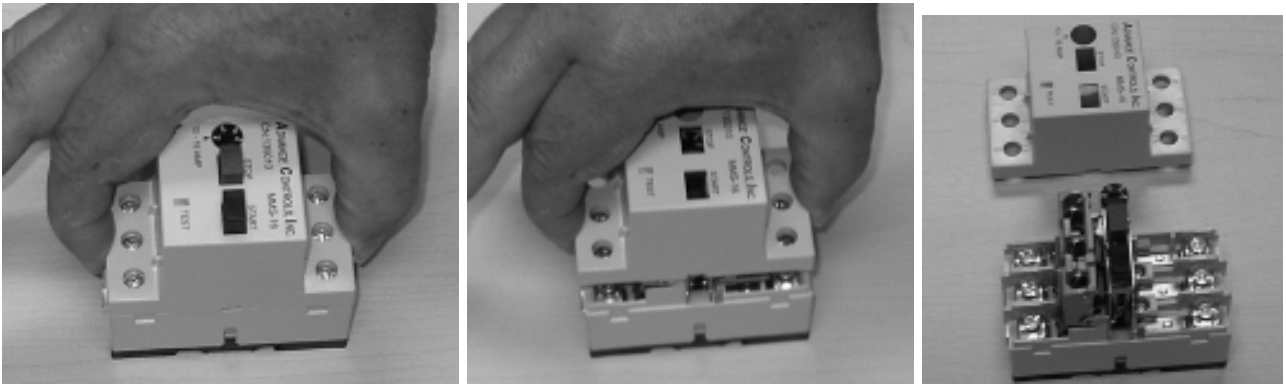




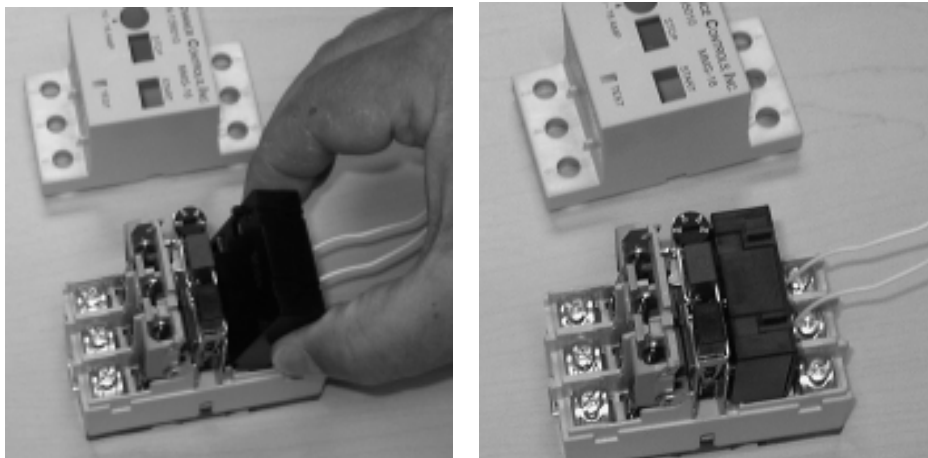
## ***FIRE SHUTDOWN OF AN IBYSS MANUAL MOTOR PROTECTOR PANEL USING A SHUNT TRIP UNIT WHEN IN LINE (BYPASS) POSITION***

To incorporate a 120volt Shunt Trip (ACI Catalog Number 135046) onto any Motor Overload Protector to BREAK the Power to the Air Handler Motor IF the IBYSS unit is in the "LINE" position.

1. Remove top cover of Manual Motor Starter by pressing lightly with thumb and forefinger by L2 and T2, and pull straight up.

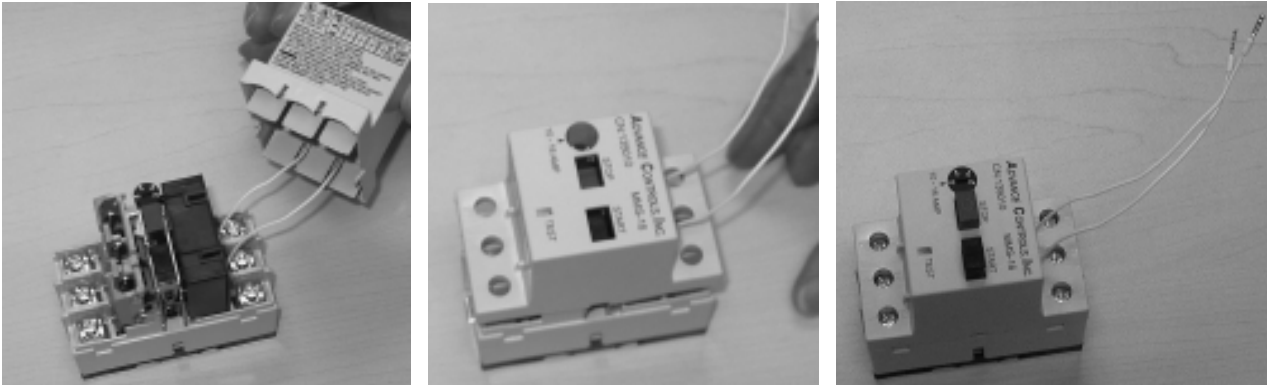


2. Install the Shunt Trip Unit (ACI Catalog Number 135046) into the Manual motor starter per the photos below.





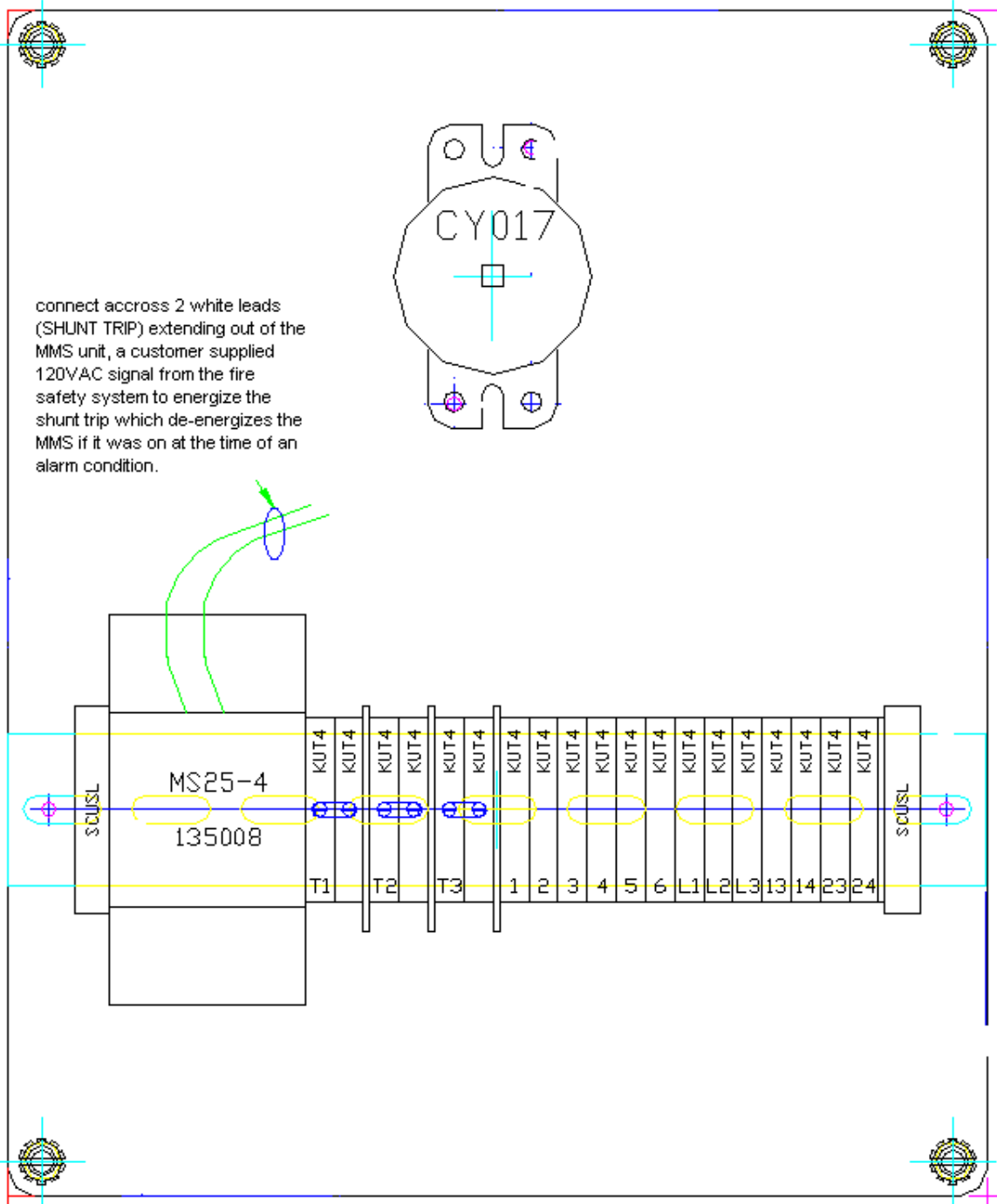
3. Run the 2-white leads from the Shunt Trip Unit through the 2-holes in the Manual Motor Starter Cover and carefully replace the Cover of the Manual Motor Starter.



***The Fire Control System would send a 120 volt signal to the Shunt Trip Unit upon alarm, (2-WHITE LEADS BETWEEN L1 & L3) and the shunt trip unit would then TRIP the Motor Overload Protector - Stopping the fan motor IF the IBYSS unit is in the "LINE" position.***

***IF the IBYSS unit is in the "DRIVE" position, the Fire Control System would have to shut down the Drive by opening the Drive's "enable" circuit.***

Below is an updated general Layout and Schematic Diagram that shows the extra wiring required for this modification.

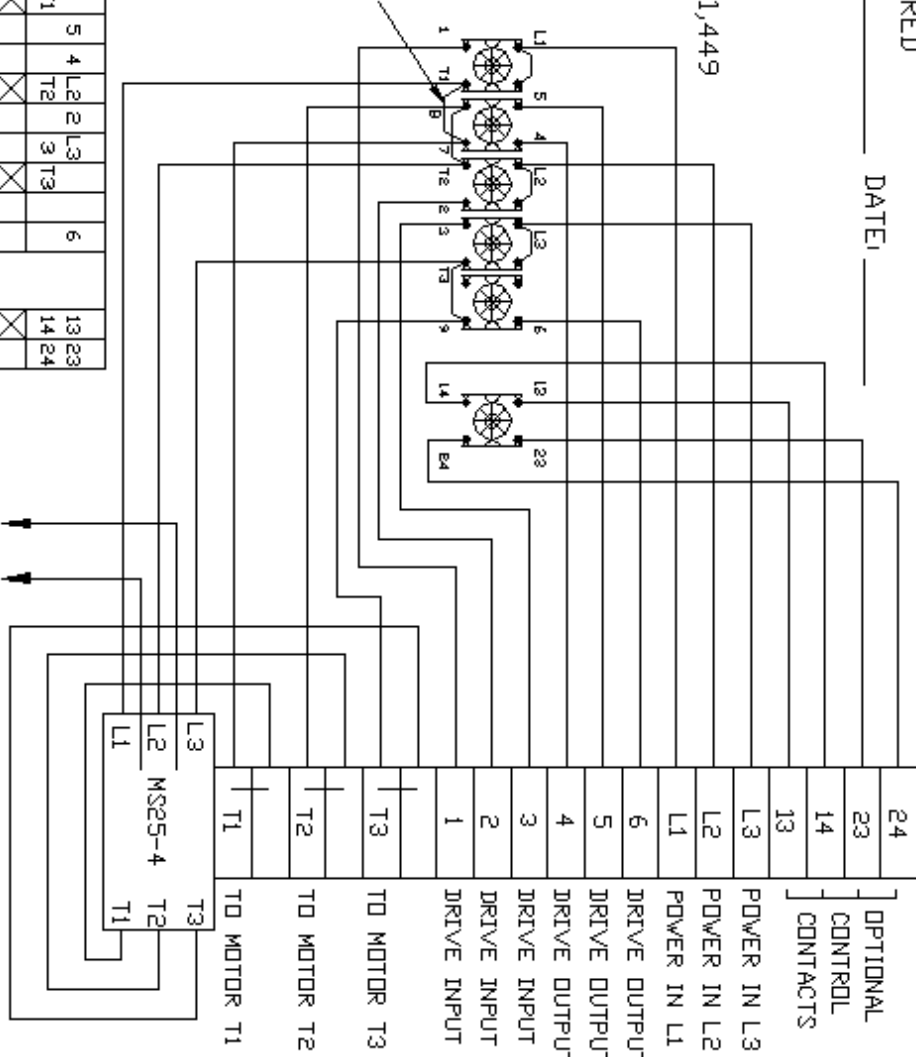
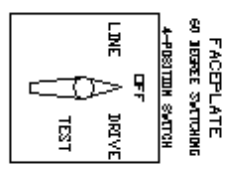




APPROVAL REQUIRED  
 APPROVED BY: \_\_\_\_\_ DATE: \_\_\_\_\_

U.S. PATENT #5,721,449

SWITCH POSITION	L1	5	4	L2	2	L3	6	13	23
LINE	1	T1	T2	3	T3			14	24
OFF									
DRIVE									
TEST									



CONNECT ACROSS B WIRE LEADS EXTENDING FROM THE MS UNIT CONTROL SIGNAL FROM THE SAFETY CIRCUIT TO REMOVE SHUNT TRIP OF MANUAL STARTER IN AN ALARM CONDITION.

DATE	REV	APPROVED BY
10-09-02	P.F.	109378-000-61
10-09-02	X	

**aci** ADVANCE CONTROLS, INC.  
 4000 SOUTH GARDEN CITY BLVD  
 GARDEN CITY, NY 11530  
 (516) 461-1000  
 FAX (516) 461-1001  
 WWW.ACICONTROLS.COM

INVERTER BYPASS SAFETY SWITCH  
 MANUAL MOTOR STARTER OVERLOAD PROTECTION  
 40-63AMP, 15HP @ 208/230, 3HP @ 480  
 TYPE 12 ENCLOSURE Q2 X 10 X 87